

4500
EAST WEST

SIGNATURE
ADDRESS
PROGRESSIVE
AMENITIES



TOTAL PACKAGE

228K RSF
OF TROPHY OFFICE SPACE


LEED PLATINUM
SINCE 2014

3 MINUTES
FROM RED LINE METRO

[TOUR BUILDING](#)

A striking landmark in the heart of Bethesda, 4500 East West is a world-class office building offering optimum performance and customer convenience. This LEED-Platinum, nine-story trophy office building offers flexible and efficient workspace, exceptional amenities, and easy access to the Bethesda Metro station, local bike paths, and four levels of below-grade parking.





4500 East West is centered around service and hospitality for its customers and guests.



SUSTAINABLE DESIGN + BUILDING PRACTICES


As the first certified LEED-Platinum property in downtown Bethesda, 4500 East West offers customers the ultimate experience in both comfort and sustainability. An energy efficient curtain wall system with a high-performance Low-E glazing minimizes heat gain and glare, reducing utility costs, and a state-of-the-art HVAC system pumps in twice as much fresh air as other buildings in the area.

HIGH PERFORMANCE WORKSPACES

Designed by award-winning architect, Shalom Baranes, the building's floor-to-ceiling windows offer generous natural daylight and promote employee wellbeing and productivity.

The 27,700 square-foot floorplates are designed for flexible customer layouts and workplace efficiency.



A modern conference room with a long table, chairs, and a large screen displaying a colorful architectural rendering. The room features wood-paneled walls, a glass partition, and a large window. The ceiling has recessed lighting and two pendant lights. The floor is carpeted with a yellow and grey pattern. In the foreground, there are two white armchairs and a small table.

Enhancing the workplace experience, the building includes a 1,900 square foot conference center with video conferencing technology.



FITNESS
CENTER

BIKE
FACILITY



LOCKER
ROOMS



FOCUS ON FITNESS

A 2,600-square-foot fitness center with locker rooms and showers, coupled with a bike facility with bike lockers and a repair station, cater to active lifestyles.

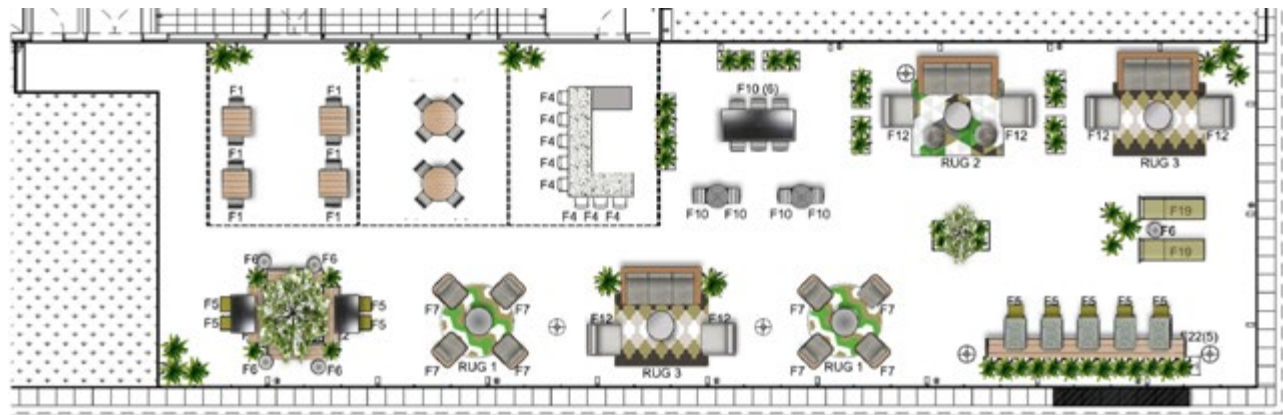
ELEVATED EXPERIENCE

A 4,500-square-foot rooftop terrace with lush landscaping, covered and open seating, a catering kitchen, restrooms, and a panoramic view of Bethesda and Northwest Washington, D.C.



ROOFTOP RENOVATIONS

COMING SOON!



PRIME + EASY ACCESS

Located just 700 feet from the Bethesda Metro station and steps away from major bus lines and bike paths, 4500 East West offers prime accessibility, no matter your mode of transportation. The building is two blocks from the upcoming, new Purple Line transit stop, serving downtown Bethesda.





BEST OF BETHESDA

Just a few blocks over from 4500 East West, stands Carr Properties' brand new, three-tower landmark development, The Wilson & The Elm, home to curated retail, including Tatte Bakery & Cafe. Abundant dining options and retail shops at Bethesda Row are also only a short walk away.



4500

EAST WEST

FOR MORE INFORMATION, PLEASE CONTACT:

PHILLIP MCCARTHY
301.896.9011
phil.mccarthy@transwestern.com

MARK BOYCE
301.896.9090
mark.boyce@transwestern.com

KEITH FOERY
301.896.9028
keith.foery@transwestern.com

KARLA RIVERA
301.896.9016
karla.rivera@transwestern.com

ERIN KURUCZA
202.775.7006
erin.kurucz@transwestern.com

OWNED AND DEVELOPED BY



EXCLUSIVE LEASING BY



6700 Rockledge Drive
Suite 500-A
Bethesda, Maryland 20817
301.571.0900 | transwestern.com

